



Subscribe to RSS



Google Custom Search

Search

- Home
- Architecture
- Concept & Competition
- Furniture
- Interiors
- Jewelry
- Lighting
- Objects
- Urban Design
- Videos
- Publications
- Upcoming Events & Competitions

ABOUT CONTACT / SUBMIT WORKS

Trident Sustainability Group | 306 W. Waldburg

in ARCHITECTURE by editor — 6:56 am | August 20, 2013 0 comments

Like One person likes this. Sign Up to see what your friends like.



Nestled in the Historic Victorian District of Savannah, Georgia this project ushers in a new era of sustainable design. Among the adjoining Victorian homes, it stands, as a beacon of modern ingenuity, blending historically compatible materials with a modern flare.

Daily Newsletter

Subscribe for receiving via email daily updates

Enter your Email Subscribe me!



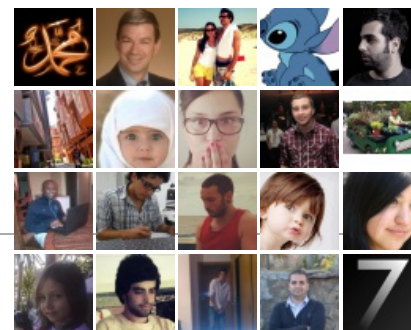
Find us on Facebook



arthitectural

Like

60,011 people like arthitectural.



Facebook social plugin

Search

See our Friends



© Angela Hopper Photography



© Angela Hopper Photography

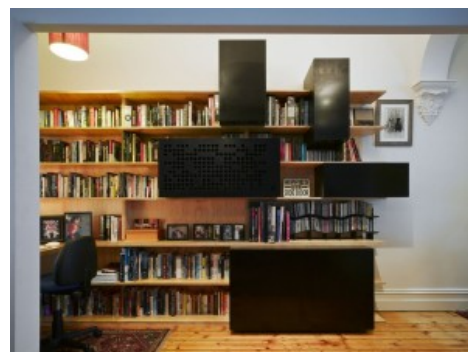
 **allhitecture**
FEATURED NEWS



mdu architetti | New Municipal Library in Greve
ARCHITECTURE | August 26, 2013 | 0 comments



Henn Architekten | Software Factory
CONCEPT & COMPETITION | August 26, 2013 | 0 comments



Andrew Maynard Architects | Brunswick
INTERIORS | August 26, 2013 | 0 comments

The project fills a niche market of dense housing that retains a single-family home scale and appeal. Located on a tenth of an acre lot, the site design crafted a private side yard that provides ample space for leisure, entertainment, and a landscape designed to be as edible as possible. Contrary to current development practices, the developer has proven high levels of sustainability can be achieved without breaking the bank. The nearly 2,000 sf home features a 3-kilowatt solar PV array, plumbing fixtures that will reduce water usage by 50%, energy star appliances, Cree and Eco-Smart LED lighting as well as a 20 SEER variable speed heat pump with energy recovery ventilation, and Low-E Laminated glass windows resulting in a home using nearly 70% less energy than a typical house.



© Angela Hopper Photography



DUDZIK Studios | Walloon Lake House
ARCHITECTURE | August 25, 2013 | 0 comments



Echorost architekti | Passive House Hradec Králové
ARCHITECTURE | August 25, 2013 | 0 comments

FOLLOW US ON [twitter](#)

RECENT NEWS



[mdu architetti](#) | [New Municipal Library in Greve](#)
ARCHITECTURE | August 26, 2013 | 0 comments



[Henn Architekten](#) | [Software Factory](#)
CONCEPT & COMPETITION | August 26, 2013 | 0 comments



[Andrew Maynard Architects](#) | [Brunswick](#)
INTERIORS | August 26, 2013 | 0 comments



[DUDZIK Studios](#) | [Walloon Lake House](#)
ARCHITECTURE | August 25, 2013 | 0 comments



[Echorost architekti](#) | [Passive House Hradec Králové](#)
ARCHITECTURE | August 25, 2013 | 0 comments



© Angela Hopper Photography

This LEED for Homes Platinum project, with proven efficiency and modern aesthetics, helps redefine sustainable home construction and demonstrates that high levels of sustainability can be achieved within a modest budget.

Location: 306 W. Waldburg Street, Savannah, USA

Architect: *Trident Sustainability Group* | Paul McKeever AIA, LEED AP

Interior designer: Rhonda Storzer

Floors: 2

Project size: 1988 sf conditioned +600 sf garage

Cost: \$150/sf

Developer: Trident Sustainability Group

Sustainability designer: Trident Sustainability Group

Start date: September 2012

Completion date: April 2013

Contractor: R. Peacock Construction

Engineer: Duloherly Weeks | MEP Design

Consultants: One World Sustainable | Solar Installation

Sustainable Features

Paint: Sherwin Williams Emerald

Dry Wall: National Gypsum 100% Recycled Content

Spray Foam: Demilec Open Cell

Flooring: Cali Bamboo Fossilized Strand Bamboo Flooring

Subfloor: Advantech Subflooring

Sheating: ZIIP Systems Sheating

Lighting: Cree and Eco-Smart LEDs

Glass: Windsor, Low-E Laminated

Solar: SunPower solar panes, enphase microinverters

HVAC: Carrier Infinity Heat Pump with Green Speed Carrier Infinity Zoning and Controls RenewAire ERV

Kitchen Dining Table: West Elm Industrial Table with Reclaimed Wood

Appliances: BOSCH Energy Star

Wine Fridge: Eurocave

Bath Toilets: Caroma Sydney Smart 270 (0.8/1.28 GPF)

Faucets & Shower Heads: Moen 90 Degree Collection (showers 1.75 gpm, faucets 1.5 gpm)

Tiles: Marca Corona

Yard Plants: Blueberry, Loquat, Lime, Lemon, Tangerine, and Herbs

Grass: Pearl's Premium Drought Tolerant Turfgrass

Fence: Salvaged from the existing site fencing and refinished

Photos: Angela Hopper Photography



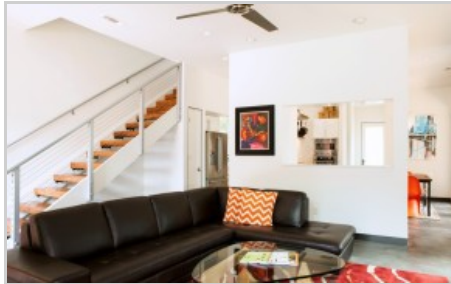
© Angela Hopper Photography



© Angela Hopper Photography



© Angela Hopper Photography



© Angela Hopper Photography



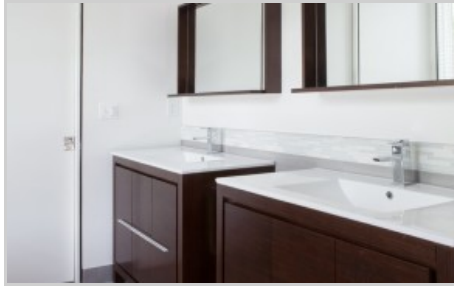
© Angela Hopper Photography



© Angela Hopper Photography



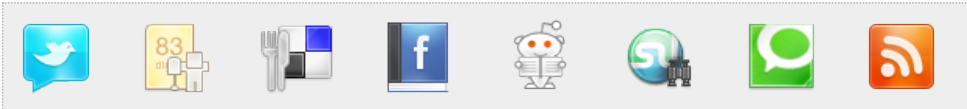
© Angela Hopper Photography



© Angela Hopper Photography

Like One person likes this. Sign Up to see what your friends like.

Tags: featured ftnews house residence residential Savannah Trident Sustainability Group USA



0 Comments

You can be the first one to leave a comment.

Leave a Comment

NAME (REQUIRED):

E-MAIL (REQUIRED):

COMMENT:

add comment

